



Beechcroft Avenue, Golders Green, NW11

Weekly Rental Of £624



800 finchley road, hampstead garden suburb, london, nw11 7tj

telephone 020 8458 5000 facsimile 020 8209 2068

email sales@litchfields.com web litchfields.com

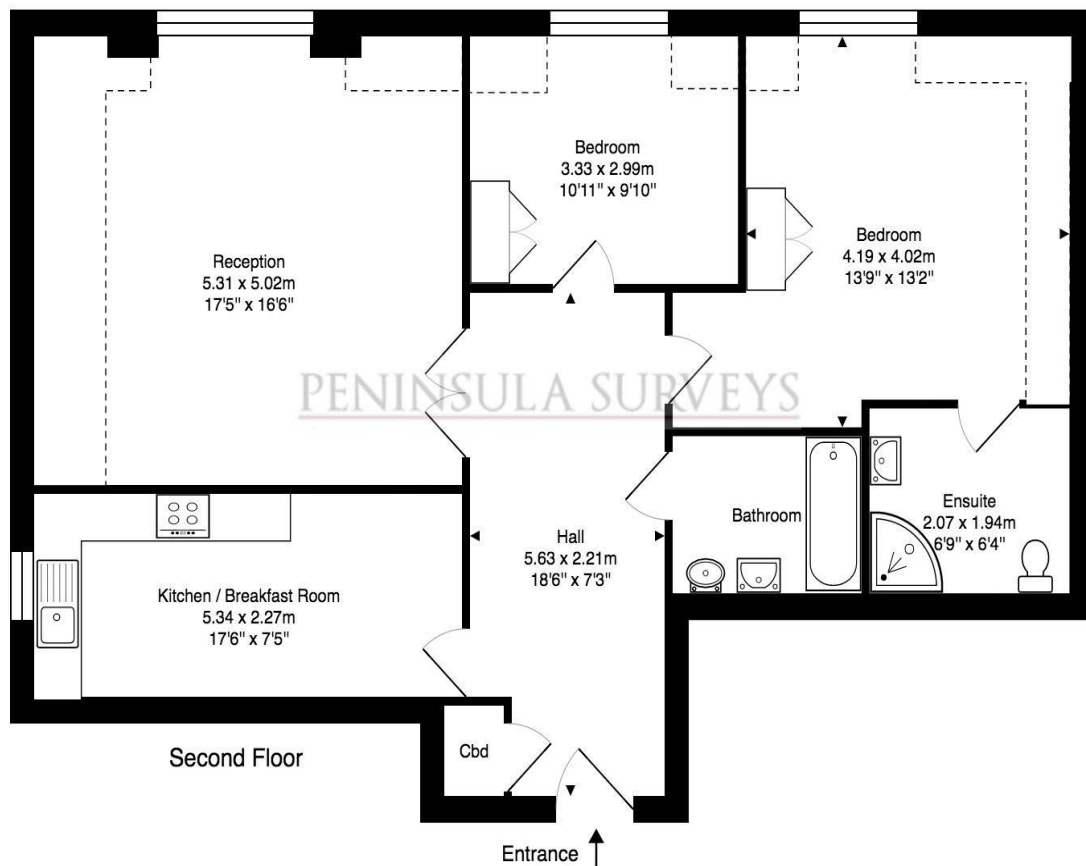
offices also in highgate

Situated on the second floor of this modern built block with lift, comprising a light and very spacious reception room, modern kitchen/breakfast room, excellent master bedroom with en suite shower room, good sized second bedroom and contemporary bathroom. Beechcroft Avenue is a pleasant residential area close to the shops, bars and restaurants of Golders Green Road and Tube Station on the Northern Line as well as Finchley Road and Golders Hill Park. Secure underground parking x 1 car make this lifestyle apartment a must see! Unfurnished.

Modern Built Block with Lift | 2 Double Bed | 2 Bath (1 en-suite) | Reception | Modern Kitchen/Breakfast Room | Very close walk to Golders Green Road & Tube Station | Wood floors | Secure Underground Parking x 1 Car | Unfurnished | EPC B | Council Tax Band E |



10 Beechcroft Avenue (8)



Approx. Gross Internal Area: 92.4 m² ... 994 ft² (Inc restricted ht areas)

Approx. Gross Internal Area: 85.4 Sq m ... 918 Sq Ft (Exc Restricted Ht Areas)

All measurements and areas are approximate only.
Dimensions are not to scale. This plan is for guidance
only and must not be relied upon as a statement of fact.
(c) Peninsula Surveys Ltd

PENINSULA SURVEYS



